

# Government Funding

National School Pride Program



## IMPORTANT INFORMATION IF YOU ARE PLANNING TO:

- **Up-grade or install a disabled toilet**
- **Install barrier free drinking fountains for disabled use**
- **Create a changing area for disabled use**
- **Refurbish science labs or domestic science areas for students with a disability**
- **Develop a disability compliant profile for your school**
- **Support Australian Business**

To be chosen as a recipient of the Government stimulus package is a great achievement, and we are sure you'll apply yours wisely.

As children with a disability are equally deserving of an opportunity to participate in mainstream schooling, the National School Pride program Building combined with (BER) Building the Education Revolution initiatives, delivers a chance to ensure facilities are fully compliant, in all aspects of relevant current legislation.

Caredesign is an Australian supplier of specialist bathroom fixtures, totally orientated to the provision of people with a disability and their carers. We have supplied numerous schools, and work closely with the relevant departments and authorities in each state, on tailoring solutions for students with various special needs.

The attached selection of our products, highlights those key elements, which you should review, in order to ensure your school meets Australian Standards AS1428.1/2/3, as well as for filling it's commitment to the Disability Discrimination Act (DDA).

 **caredesign**  
specialist interiors

PO Box 2129, Taren Point, NSW 2229 Australia  
Phone: 1300 798 744 Fax: 1300 793 644  
email: [info@caredesign.com.au](mailto:info@caredesign.com.au) [www.caredesign.com.au](http://www.caredesign.com.au)

# Specialist fixtures and solutions for people with a disability and their carers

## Barrier Free Drinking Fountains



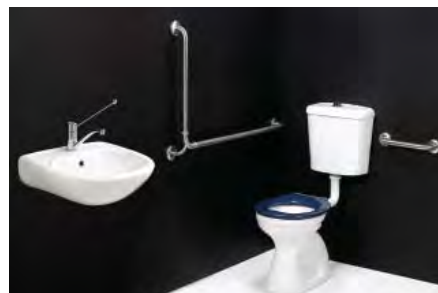
### Accessible Wall Mounted Drinking Fountain

- Front push button and polished chrome-plated brass bubbler head
- One-piece rounded stainless steel bowl - satin finish
- Chilled options available
- Hi-Lo Split height design with matching satin finish back panel

### Accessible Hi-Lo Wall Mounted Drinking Fountain

An accessible drinking fountain is required under AS1428.2, adjacent to any able bodied drinking fountain provision that is made.

## Carekit™ - Accessible Toilet Solutions



An accessible unisex toilet is required under AS1428.1, in any public building, where an able bodied toilet provision is also offered.

### Carekit

#### Contents:

- Stainless Steel grabrails – 32mm diameter (1 x angled, 1 x straight)
- Toilet Pan - flush cistern and CARE toilet seat
- Wall mounted single tap hole washbasin with extended handle single lever mixer
- Optional Anti-scald TMV for warm water delivery and compliance.



## Change Table



### Adjustable Height Change Table

To overcome the occupational health & safety risks associated with transferring a person from a wheelchair to a platform or bench, for treatment or hygiene care, it is advisable to consider the use of an adjustable height changing table.

- Suitable for wet environments, including showering
- Minimises OH&S issues - 700mm adjustability
- Follows DDA guidelines
- Folds up when not in use

## Adjustable Benchtops



### Adjustable Height Bench Tops

It is incumbent on schools, to ensure that laboratory and domestic science area's, can cater for students with a disability, which includes benchtops that offer height adaptability along with full wheelchair friendly access

- Worktops are adjustable to a comfortable height using switches on the worktop front.
- Can be adjusted vertically by 400 mm
- Equipped with a safety bar under the frame to prevent pinching or crushing injury

**care design**  
specialist interiors

PO Box 2129, Taren Point, NSW 2229 Australia  
Phone: 1300 798 744 Fax: 1300 793 644  
email: info@caredesign.com.au www.caredesign.com.au