

Carekit™

Accessible Toilet Solutions

AS1428.1 provides the minimum requirements for a disabled toilet in any public accessible building.

Caredesign has a simple, all in one solution for providing practical facilities that can be used by all with dignity and ease. Our Carekits meet the AS1428.1-2001, BCA and DDA requirements.

Choose from two Carekits-
Luxury or Standard



 **caredesign**
specialist interiors

Luxury Carekit™

The Caredesign "Luxury" Carekit is the ideal way to create an up market accessible toilet solution, combining practicality and high quality finishes, which fully complies with AS1428.1-2001, BCA & DDA requirements.

One product code that eliminates the hassle of sourcing multiple items from various suppliers. Suitable for both left or right handed room configurations, the Luxury Carekit is delivered in one single palletised pack.

Luxury Carekit contains all of the following:

- Wall faced care pan
- Dania Care toilet seat- single flap
- Toilet pan infill
- Touch activated flushing system
- Slip resistant angled grabrail – 33mm diameter
- Wall mounted single tap hole basin with integral trap
- Electronic hands free sensor tap with WELS 4 star rating

Product Code Luxury Carekit

CARE500S S trap pan

CARE500P P trap pan



Wall Faced Care Pan

High level, wall faced pan to comply with AS1428.1, including either S or P trap options.

Dania Care Toilet Seat - single flap

Pressalit Care Dania features heavy-duty stainless steel hinges and adjustable stability buffers to combat lateral movement. White is supplied standard, Grey or high contrast Blue for the visually impaired are available at no extra charge – specify when ordering. Weight load rated to a maximum of 250kg.

Toilet Pan Infill

Concealment of all pipework behind the toilet pan is disguised by a decorative pan infill, supplied as standard with this particular Carekit.

Touch Activated Flushing System

The flushing mechanism is directed by an electronic single touch Piezo switch, delivering half (3Lt) or full flush (6Lt).

Slip Resistant Angled Grabrail – 33mm diameter

This Pressalit Care grabrail is AS1428.1 compliant, made from strong aluminium with a slip resistant powder lacquered finish. White is supplied standard, Grey or high contrast Blue for the visually impaired are available at no extra charge – specify when ordering. The angled grab rail design, allows installation for both right, and left hand layouts.

Wall Mounted Single Tap Hole Basin with Integral Trap

500mm wide x 440mm front to back, including chrome plated pop up waste.

Electronic Hands Free Sensor Tap with WELS 4 Star Rating

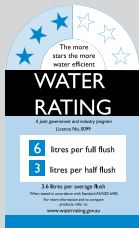
Enmatic mains powered basin tap is activated by an infra-red sensor providing a hygienic hands free rinse with automatic shut-off. Suitable for cold or premixed water only.



Tapware



Flushing System



Wall Faced Care Pan

Standard Carekit™

This AS1428.1-2001 compliant kit provides a solitary product code that eliminates the hassle of sourcing multiple items from various suppliers.

Suitable for both left or right handed room configurations, the Standard Carekit is delivered in one single palletised pack.

Standard Carekit contains all of the following:

- Care pan and cistern complete with raised flush buttons for 6/3L flush
- Dania Care toilet seat – single flap
- Stainless Steel grabrails – 32mm diameter. 1 x angled, 1 x straight
- Wall mounted single tap hole washbasin
- Single lever mixer with extended handle and WELS 4 star rating
- Optional inclusion of an Aquablend 1000 Anti-scald TMV for warm water delivery and compliance

Product Code	Standard Carekit
CARE300S	S trap pan with Aquablend 1000 TMV
CARE300P	P trap pan with Aquablend 1000 TMV
CARE400S	S trap excludes TMV
CARE400P	P trap excludes TMV



Care Pan and Cistern

High level pan to comply with AS1428.1-2001, including either a concealed S or P trap.
Low level vitreous cistern - 6/3 litre dual-flush with raised height flush buttons to comply with AS1428.1

Dania Care Toilet Seat – single flap

Pressalit Care Dania toilet seat features strong stainless steel hinges and adjustable stability buffers to combat lateral movement. Blue is supplied standard, providing high contrast.
Weight load rated to a maximum of 250kg.

Stainless Steel Grabrails – 32mm diameter.

1 x angled, 1 x straight
32mm diameter to comply with AS1428.1-2001 configurations, finished in stainless steel with covered wall plate fixings. The angled rail design allows installation for right or left hand room configurations.

Wall Mounted Single Tap Hole Washbasin

Single tap hole design, with overall dimensions of 500mm wide x 410mm front to back.

Single Lever Mixer with Extended Handle and WELS 4 Star Rating

WELS rated water efficient basin mixer with an extended lever handle to meet accessible toilet requirements.

Aquablend 1000 Thermostatic Mixing Valve for Anti-Scald Protection

For controlled temperature warm water with thermal shut-off capability, as required by AS3500. The Aquablend 1000 is Australian made, incorporating proven technology for peace of mind and low cost maintenance over the serviceable life of the valve.



Aquablend 1000 TMV

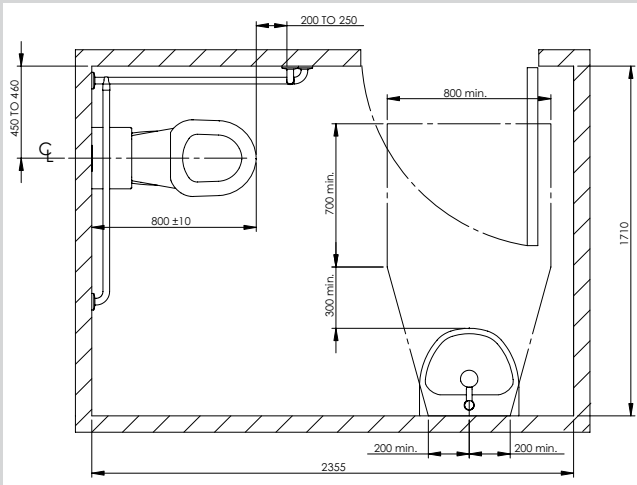


Tapware



Care Pan and Cistern

Designing a compliant and functional accessible toilet



Sample room layout - Carekit allows for both left or right hand room configuration.

In accessible toilets the circulation space is a critical element, as is providing practical aids at suitable heights.

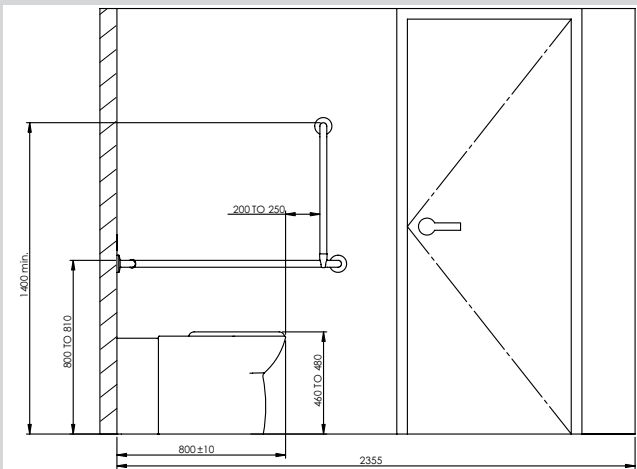
The complex process is detailed in the Australian Standard AS1428.1-2001.

The Carekit™ has been designed to provide the materials to meet these requirements.

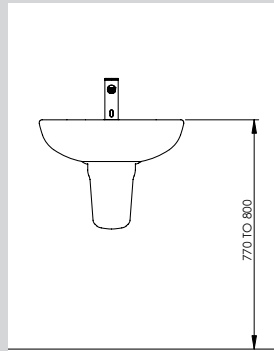
Here is a sample room drawing to be used as a guide only, showing a toilet layout that meets the minimum special requirements of AS1428.1.

Design tip: Consider the circulation space in the corridor outside the toilet door - sliding doors minimise space required and are more convenient for pedestrian traffic.

For more tips and alternate room design options visit www.caredesign.com.au



Grabrail height parameters.



Top of the basin height to be 770 to 800mm

A comprehensive installation guide is supplied with all Caredesign Carekits

Important: This information is provided as a guide only and is based on AS1428.1-2001. Independent design assessment and approval by an appropriately qualified consultant is required to ensure compliance with current standards and building code requirements.

Diagrams not to scale

Luxury Carekit™ Technical Information

Electronic Sensor Tap - Mains Power

Maximum temperature: 70°C

(see below for Warm Water requirements)

Operating working pressure: 50 – 800kPa

Note: Must be installed in compliance with AS/NZS 3500, which states maximum pressure 500kPa at any outlet.

Touch Activated Flushing System - Mains Power

Minimum supply line 25mm with 40mm flush pipe, minimum length of 600mm (flush pipe not supplied with Carekit)

Recommended working pressure: 180 – 300kPa

Standard Carekit™ Technical Information

Single Lever mixer – Extended Handle

Maximum temperature: 80°C

(see below for Warm Water requirements)

Operating working pressure: 250 – 800kPa

Note: Must be installed in compliance with AS/NZS 3500, which states maximum pressure 500kPa at any outlet.

Heated Water Supply AS/NZS 3500.4

For all sanitary fixtures used primarily for personal hygiene purposes are to deliver heated water not exceeding:

a) 45°C for early childhood centres, primary and secondary schools and nursing homes or similar facilities for young, aged, care, sick or people with disabilities (43.5°C – NSW Code of Plumbing Practice)

b) 50°C in all other buildings

Aquablend Thermostatic Mixing Valves can be used to meet these requirements of AS/NZS 3500.4 part a – for more information contact Enware on 1300 369 273 (1300 ENWARE)

 **caredesign**
specialist interiors

PO Box 2129, Taren Point, NSW 2229, Australia

Phone: 1300 798 744 Fax: 1300 793 644

email: info@caredesign.com.au www.caredesign.com.au